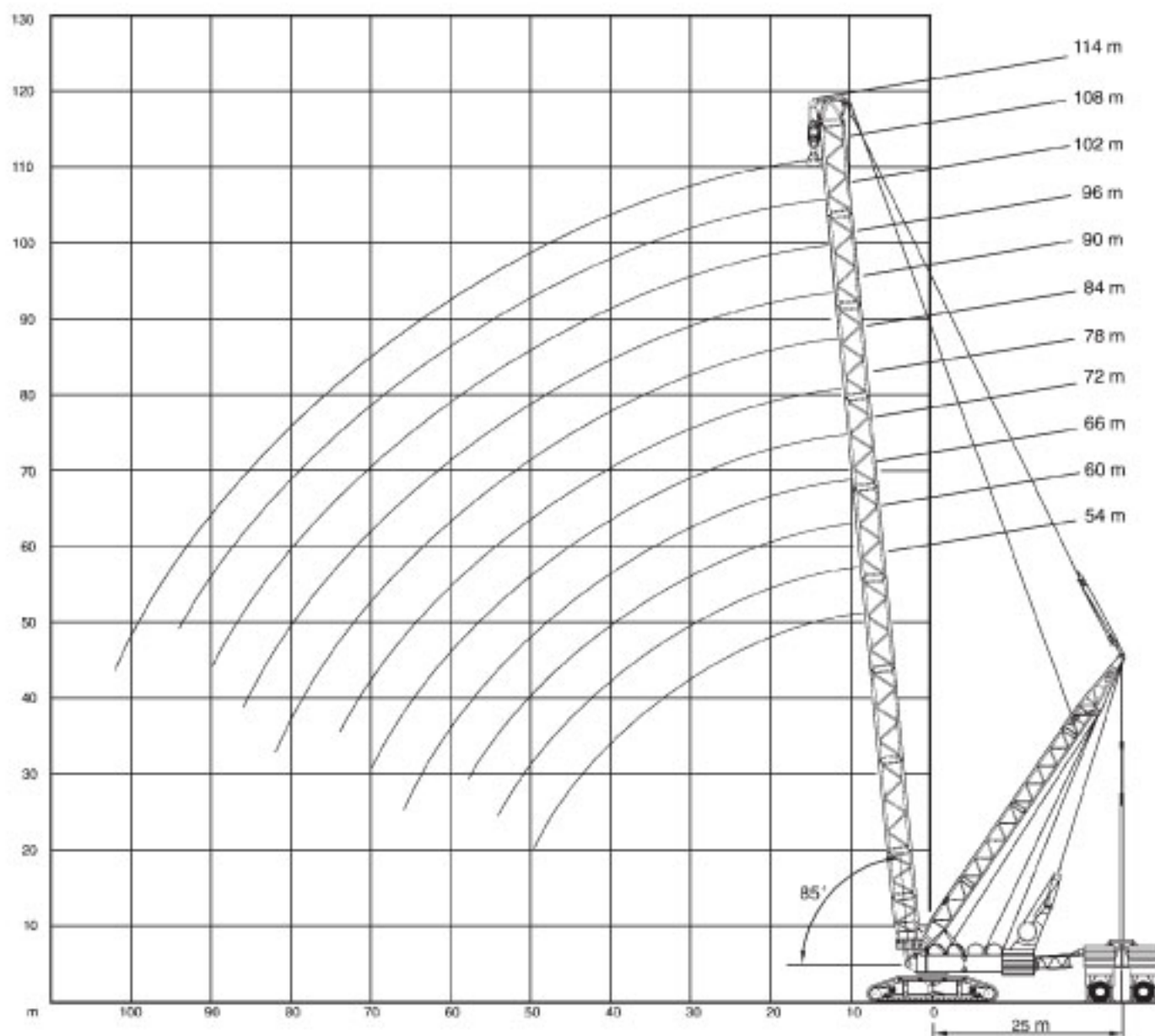


# 1600 t

RAUPENKRAN  
CRAWLER CRANE  
GRUE SUR CHENILLES

## SSL

Arbeitsbereiche Hauptausleger mit Superlift  
Working ranges main boom with Superlift  
Portées de flèche principale avec Superlift



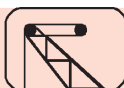
RAUPENKRAN

CRAWLER CRANE

GRUE SUR CHENILLES

**1600 t**

**SSL**



**DIN**

54-114m

48m



12,2m

370t

1500t

360°

75%

	54	60	66	72	78	84	90	96	102	108	114	
12	1600	1600	1600	1600								12
14	1600	1600	1600	1600	1600	1580	1480	1310	1200	1050	932	14
16	1600	1600	1600	1600	1600	1580	1480	1310	1200	1050	932	16
18	1600	1600	1600	1600	1600	1580	1464	1310	1200	1050	932	18
20	1514	1600	1600	1600	1600	1546	1441	1310	1200	1050	932	20
22	1433	1509	1600	1600	1600	1505	1412	1310	1200	1050	932	22
24	1356	1424	1503	1546	1539	1459	1377	1287	1200	1050	932	24
26	1284	1343	1409	1444	1474	1408	1336	1259	1200	1050	932	26
28	1215	1267	1320	1351	1405	1352	1291	1226	1200	1050	932	28
30	1150	1195	1238	1265	1326	1293	1243	1190	1184	1033	932	30
34	991	1052	1089	1110	1115	1123	1119	1109	1085	990	932	34
38	825	884	921	945	953	964	963	962	955	935	877	38
42	692	750	787	813	824	837	839	841	835	832	819	42
46	580	639	678	705	719	734	738	742	738	736	742	46
50	481	545	586	615	631	648	653	659	657	657	662	50
54		461	506	537	556	574	581	588	596	589	594	54
58			434	469	490	510	519	528	537	531	536	58
62				408	432	454	464	474	485	480	485	62
66				351	379	403	415	427	439	435	440	66
70					329	357	371	384	398	394	400	70
74						313	330	345	360	358	363	74
78							292	309	326	324	331	78
82							256	275	294	294	300	82
86								243	263	265	272	86
90									234	238	246	90
94										212	222	94
98											198	98
102											175	102